

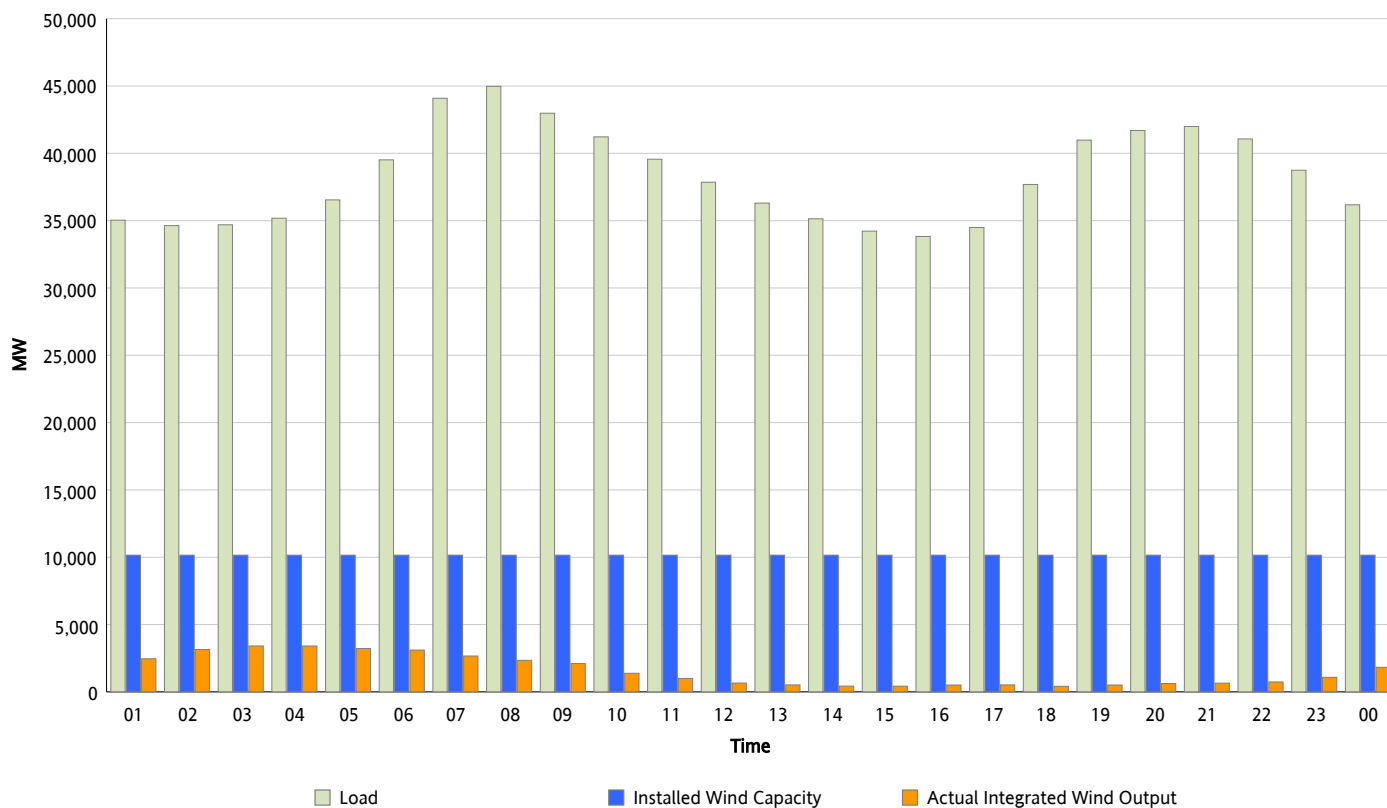


ERCOT Grid Operations

Wind Integration Report : 12/11/2012

Peak Load	44,974 MW
Load Peak Hour (HE)	08
Wind Over Peak	2,106 MW
Wind Record 11/10/12	8,521 MW
Max Wind Value*	3,491 MW
Wind Peak Time	03:31
Wind Integration %	9.92 %

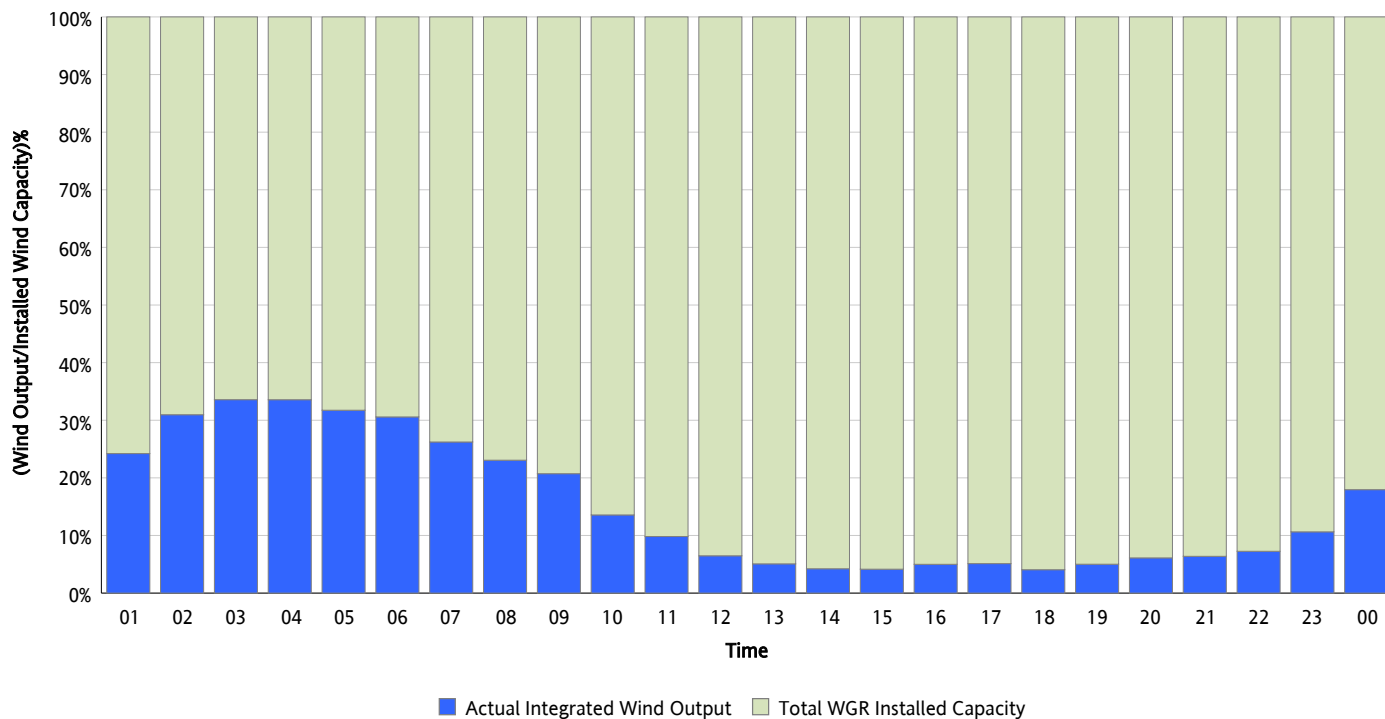
Hourly Average Actual Load vs. Actual Wind Output
12/11/2012



* Wind Record and Wind Max represent instantaneous values and the rest of the values are integrated over the hour

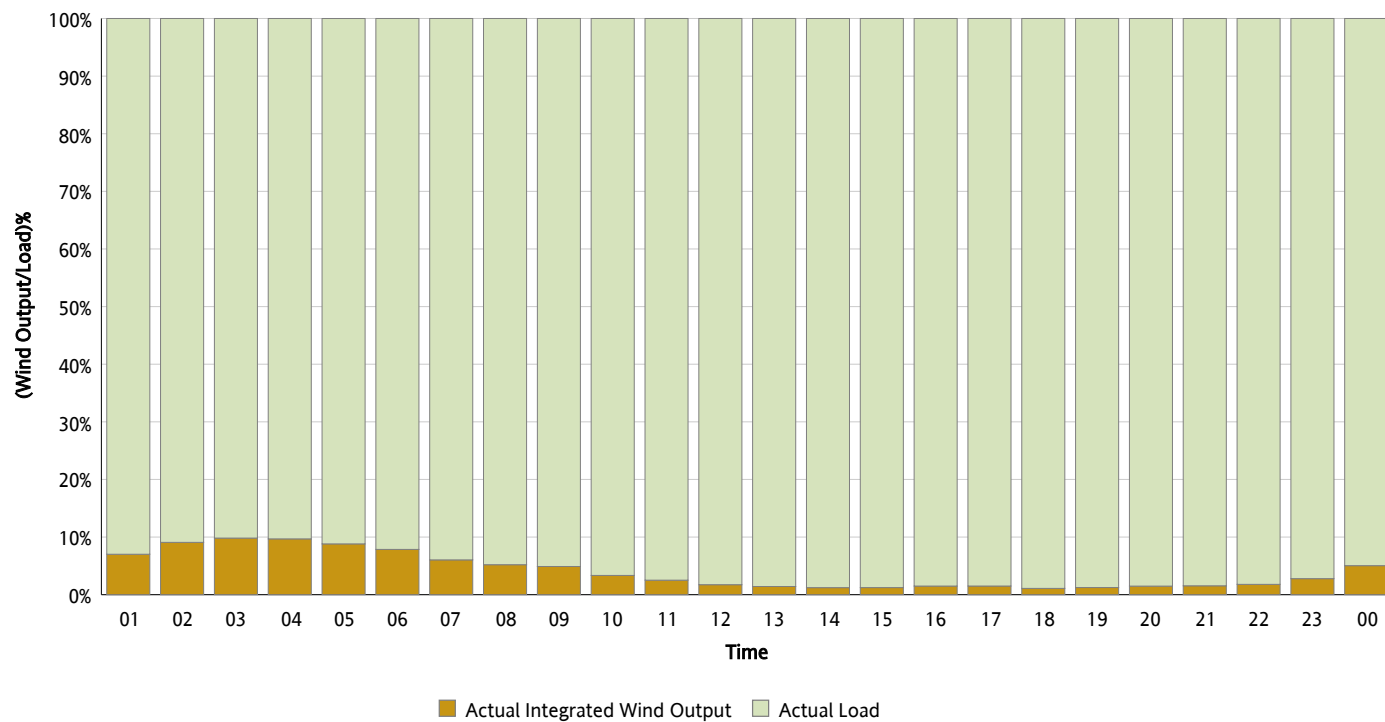
Actual Wind Output as a Percentage of the Total Installed Wind Capacity

12/11/2012



Actual Wind Output as a Percentage of the ERCOT Load

12/11/2012



ERCOT Load vs. Actual Wind Output

12/04/2012 - 12/11/2012

